


2/31 Murphys Rd, Gwynneville, NSW 2500

\$850,000 - \$895,000

Townhouse 4  2  2 



4 double bedrooms plus study!

Ideally located opposite the Wollongong Botanical Gardens and just minutes' walk to Keiraville Village and Wollongong University alike, this big, modern and well-appointed townhouse offers a fresh contemporary décor and features quality inclusions and fixtures throughout.

Located in a small block of only 3, there is plenty of accommodation with 4 double bedrooms – all with built-in wardrobes – plus a separate study area, an ensuite to the master bedroom and open plan living areas. Luxury kitchen with polyurethane and stone finishes, stainless steel appliances including dishwasher, gas cooktop and heating throughout. Split system air-conditioned comfort, alarm system, sunny north facing private courtyard and internal access from the two car remote control double garage.

Council Rates: \$1745pa | Strata: \$2260 pa | Water: \$680pa + use.

Open for Inspection

Sat, 21 Oct 2017 - 10:30 AM to 11:00 AM

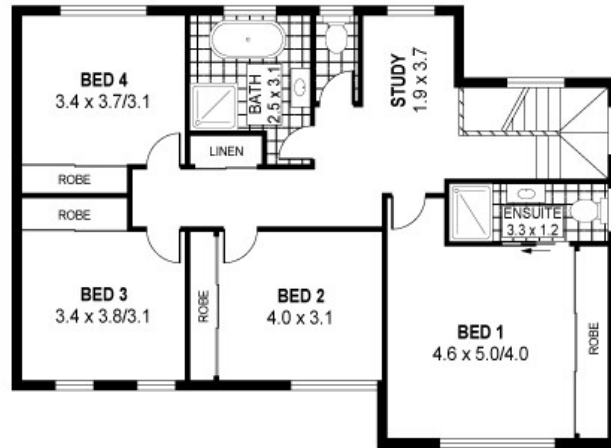
Listed By



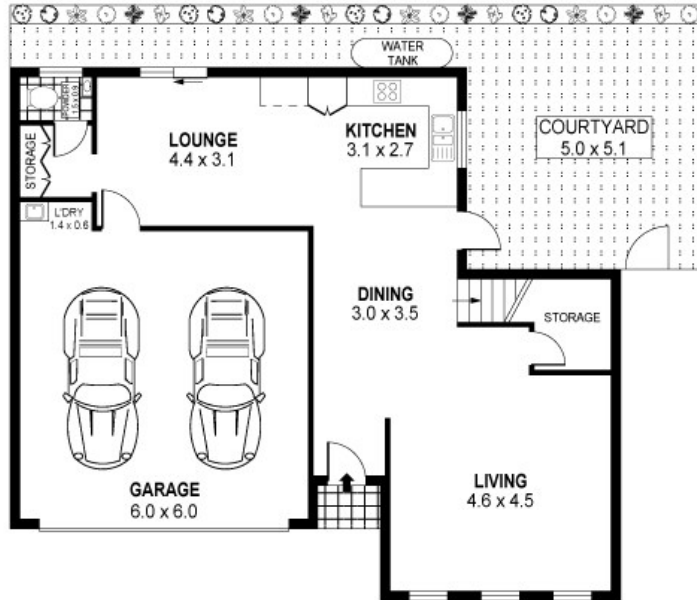
David Meikle
Phone: (02) 4229 9877
Mobile: 0412 422 294



Floorplan



UPPER LEVEL



GROUND LEVEL



PLANS SHOWN ONLY INDICATIVE OF LAYOUT. DIMENSIONS ARE APPROXIMATE.
Ref. No. 53505

INT : 161m²
EXT : 35m²
GARAGE / L'DRY : 37m²

UNIT 2, 31 MURPHYS AVENUE

KEIRAVILLE