

28 Jardine St, Fairy Meadow, NSW 2519

Negotiable Terms

Office Suite, Signage, Warehouse & Office 1 



As New - large fully renovated commercial

You Must See - 123 square metres of sparkling as-new commercial space.

Impressive facade with this two storey premises. Large formal entry, upstairs set up as multiple office-suites plus brand new kitchen facilities and brand new bathroom facilities.

Generous multi-purpose room downstairs. Separately metered for water and power, alarm system, NBN installed.

Prime side street location, quiet area. Zoned IN2 - Light industrial. Off street parking for 1 car.

Suit many professional services businesses looking to escape high rental CBD core.

Flexible term lease available.

Call- Nick Logan or 02 4229 9877

Open for Inspection

By Appointment.

Property Features

- As new
- Spacious
- Quiet area

Listed By



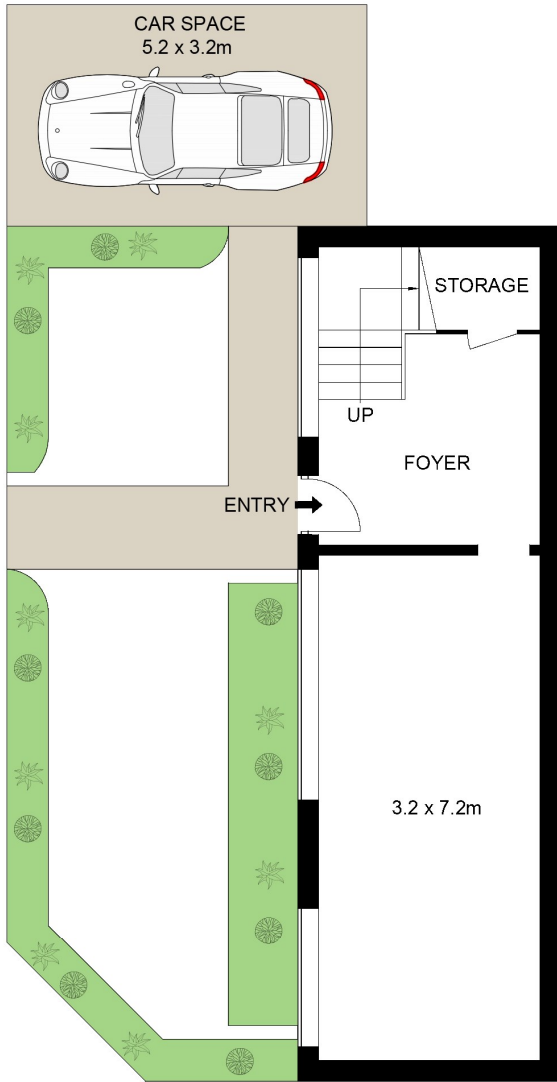
Nick Logan
Phone: (02) 4229 9877
Mobile: 0418 420 090



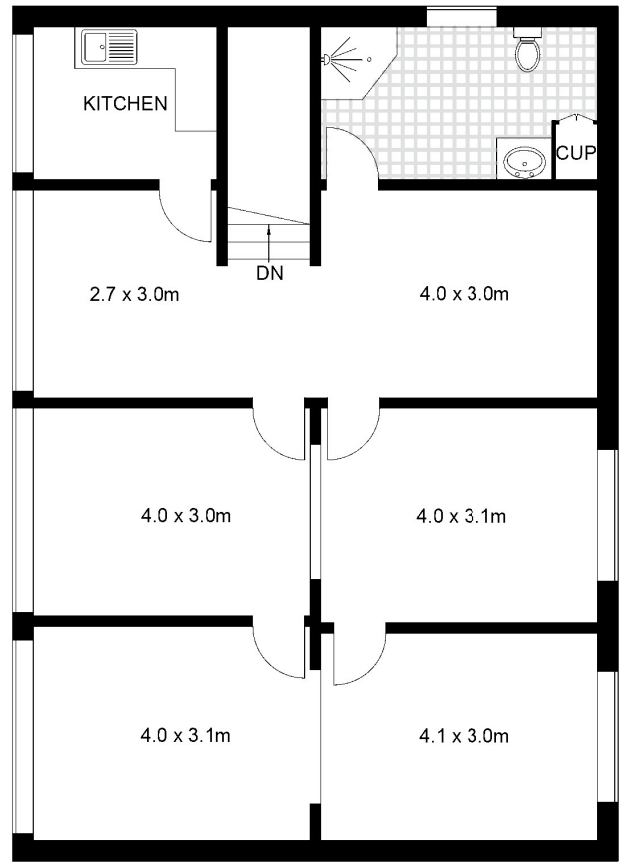
David Meikle
Phone: (02) 4229 9877
Mobile: 0412 422 294



Floorplan



GROUND FLOOR



FIRST FLOOR

Scale in metres. Indicative only. Dimensions are approximate. All information contained herein is gathered from sources we believe to be reliable. However, we cannot guarantee its accuracy and interested persons should rely on their own enquiries.

28 Jardine Street, Fairy Meadow